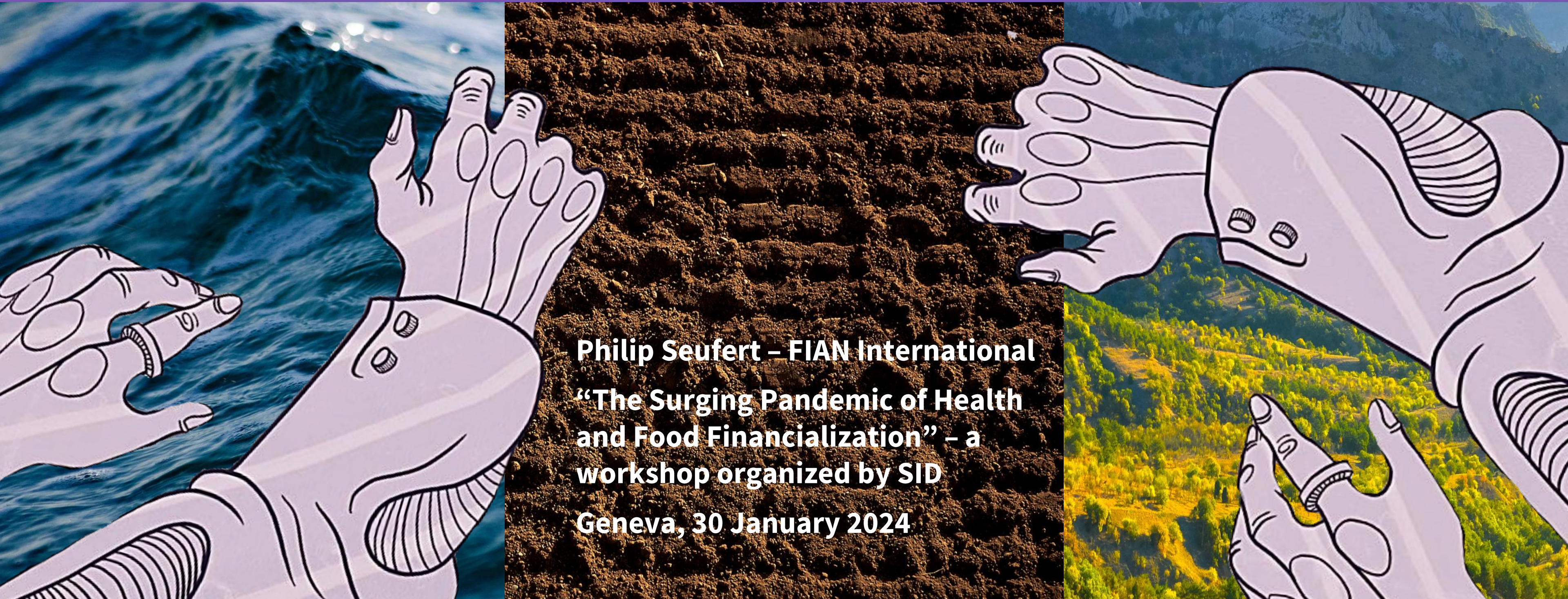


THE FINANCIALIZATION OF PEOPLE'S TERRITORIES: IMPACTS ON COMMUNITIES AND CHALLENGES FOR ACCOUNTABILITY



Philip Seufert – FIAN International
“The Surging Pandemic of Health and Food Financialization” – a workshop organized by SID
Geneva, 30 January 2024

MATOPIBA, BRAZIL

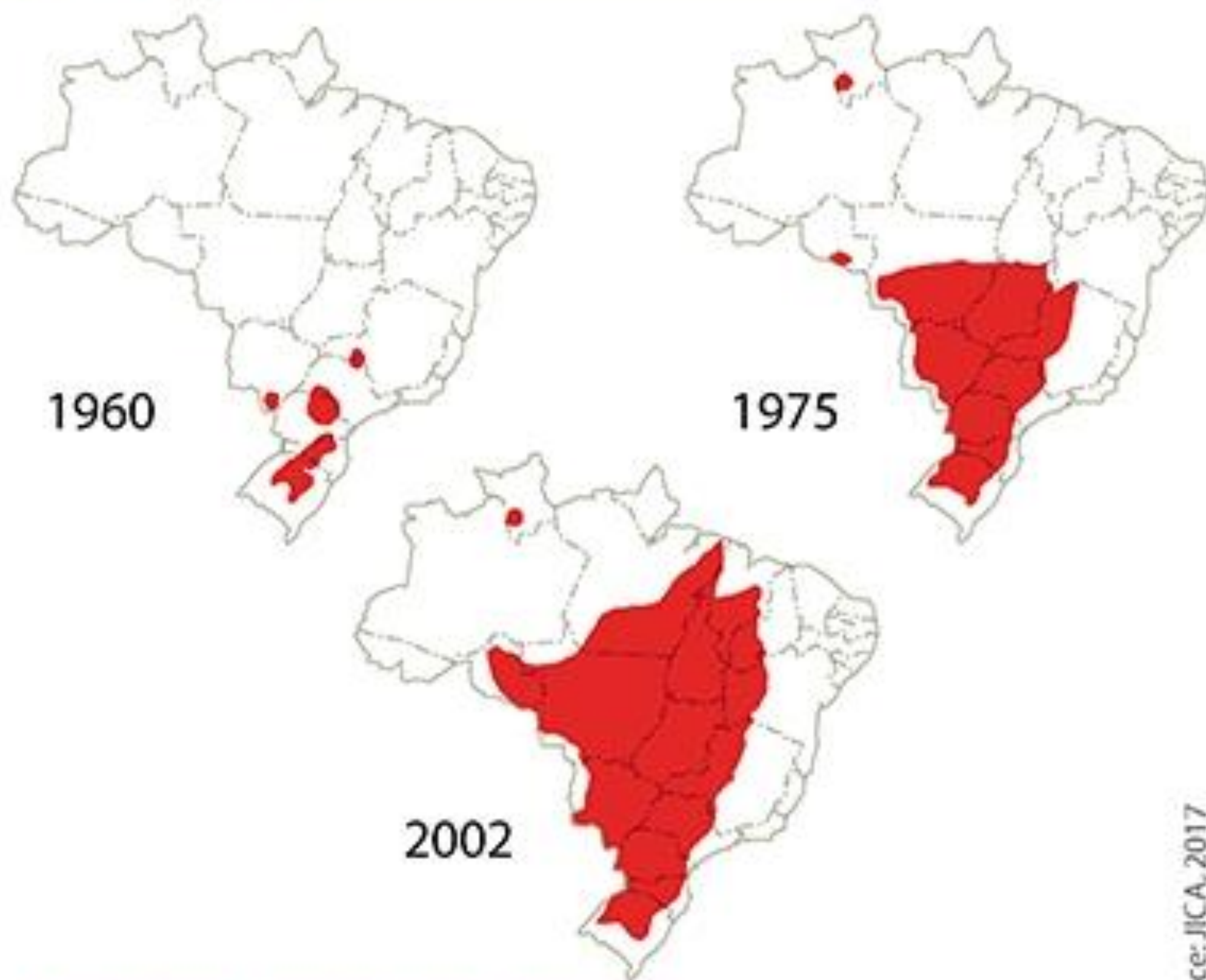








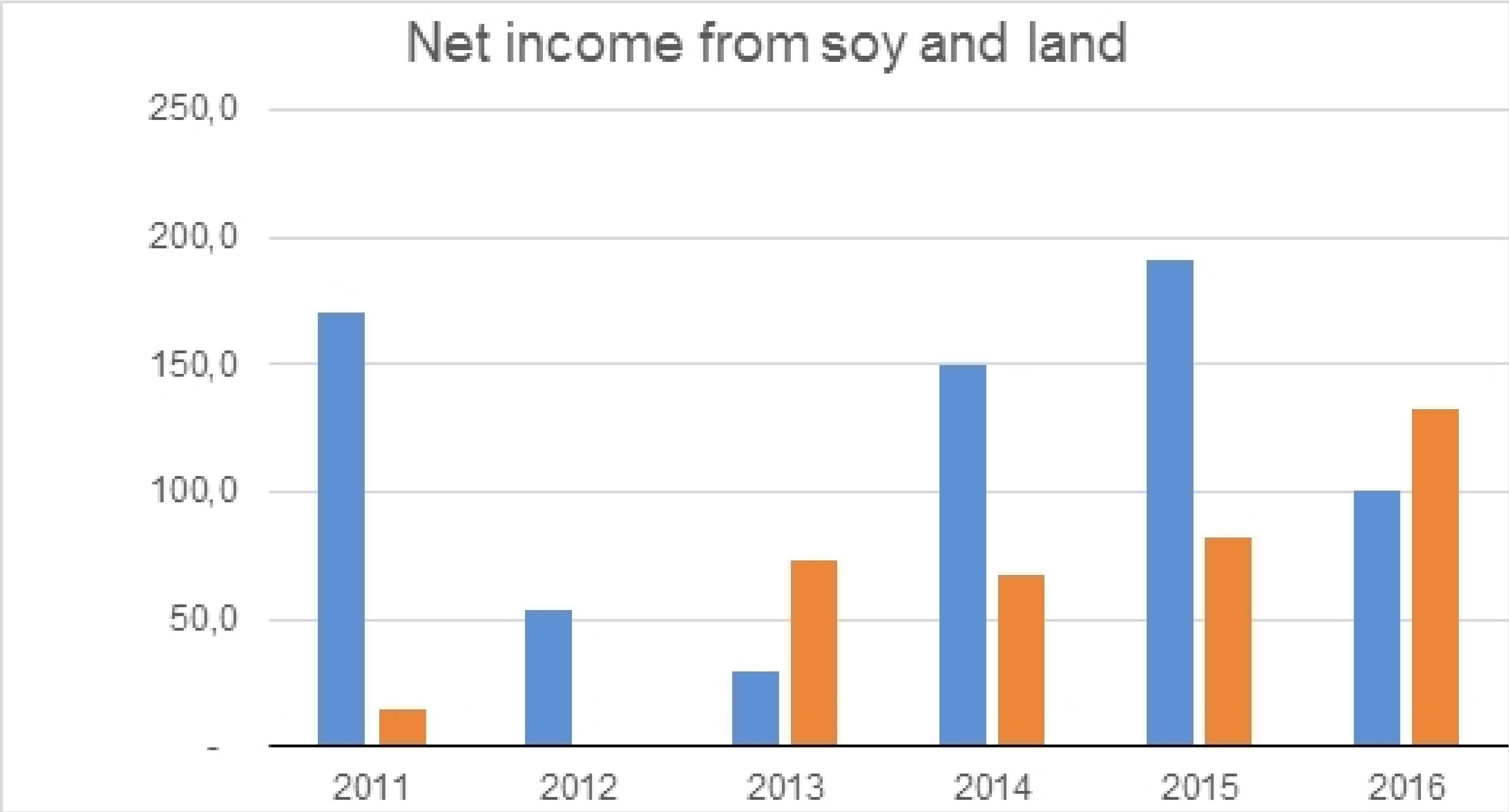
Soybean Expansion in Brazil, 1960–2002

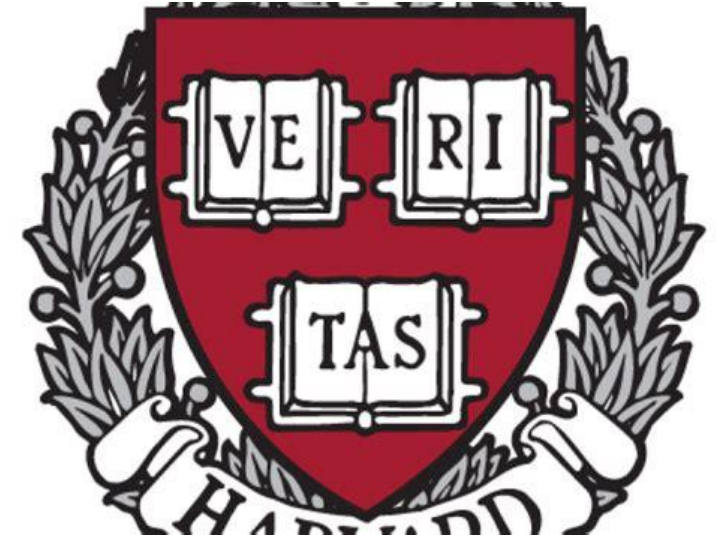


#CaravanaEuropa #BrazilLandGrab

Source: JICA, 2017

FROM AGRIBUSINESS TO LAND COMPANIES



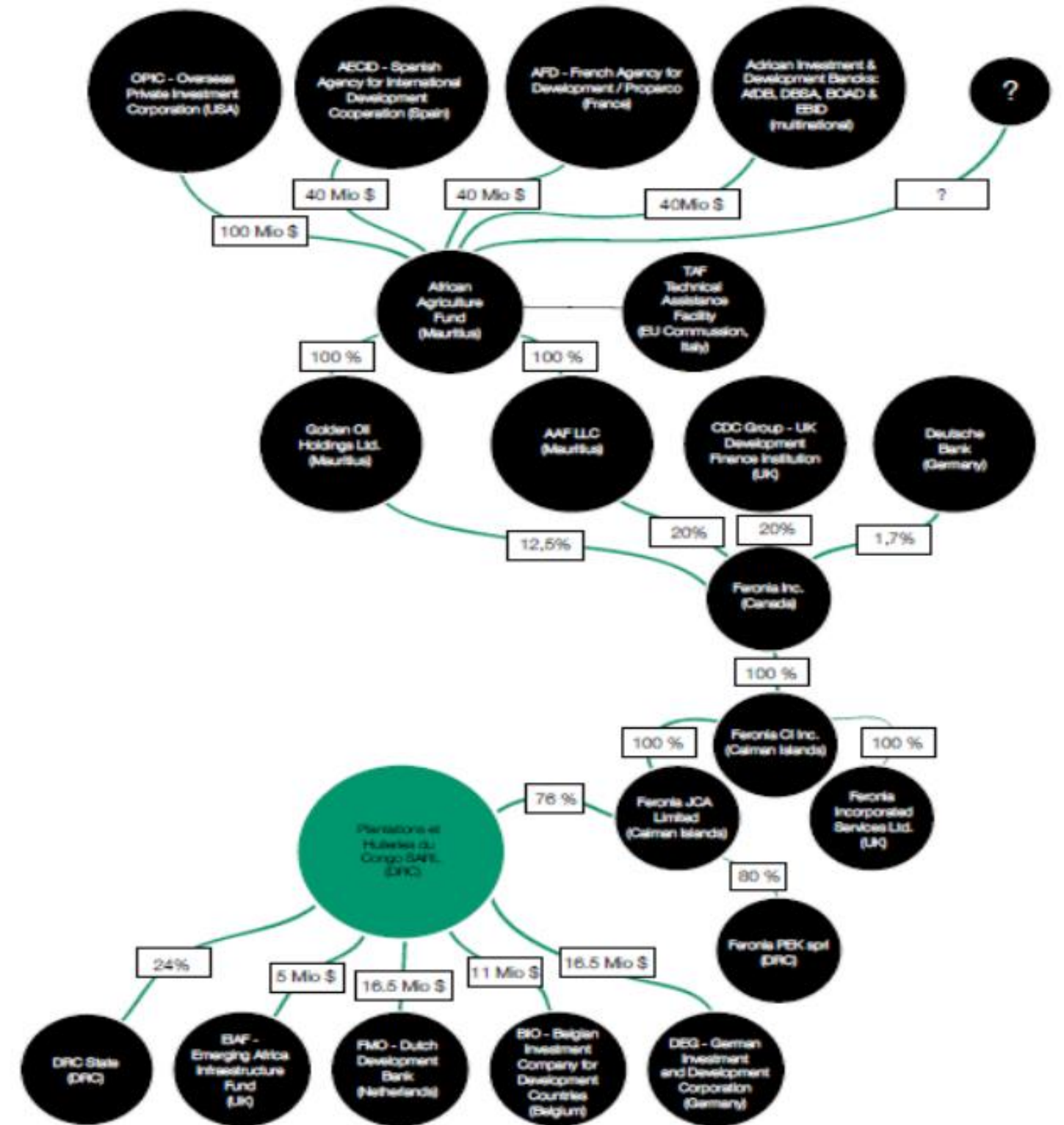


nuveen

A TIAA Company



Investment web of an agribusiness project
Democratic Republic of Congo



INVESTMENT WEBS

BEHIND PRODUCTIVE AND SPECULATIVE INVESTMENTS

Dispossession of people and communities, and destruction of lands, rivers, lakes, rangelands, forests, oceans and homes around the world. People lose access to and control over their territories, which constitute the very basis of communities social fabric and their ecological relationships.

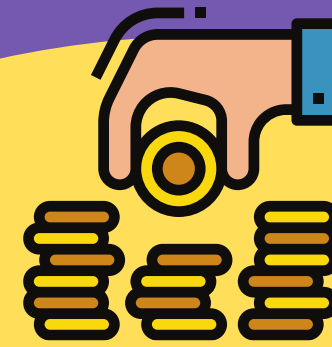


NEW ASSET CLASSES

Land, water, oceans, forests, “ecosystem services” etc.

NEW FINANCIAL INSTRUMENTS

futures, derivatives, etc.



FINANCIAL CAPITALISM

NEW MARKETS

Derivative markets, carbon markets etc.

NEW ACTORS

Asset management companies, insurance companies, investment funds, hedgefunds etc.

Investment webs,
“distant actors”,
blended finance, PPP
etc.

Tax havens,
offshore financial
centers, etc.

FINANCIALIZATION
=
**NEW CHALLENGES FOR
ACCOUNTABILITY**

Bioeconomy, “Nature-
based solutions”, etc.

Data, Digital technologies,
GIS etc.

IMPLICATIONS FOR MOBILIZATION AND ADVOCACY STRATEGIES

1. Update the “land agenda”

- Land data, land ownership, land use: are land registries and statistical systems equipped to grasp the reality of corporate ownership, investment webs, financialized forms of ownership

- Address and regulate corporate and financialized forms of ownership (“foreign land ownership”)

- Update demands for redistributive agrarian reforms: “definancialize”, expropriate land managed through financial centers/tax havens

- > Recognition of unsustainable levels of land concentration

2. Beyond land

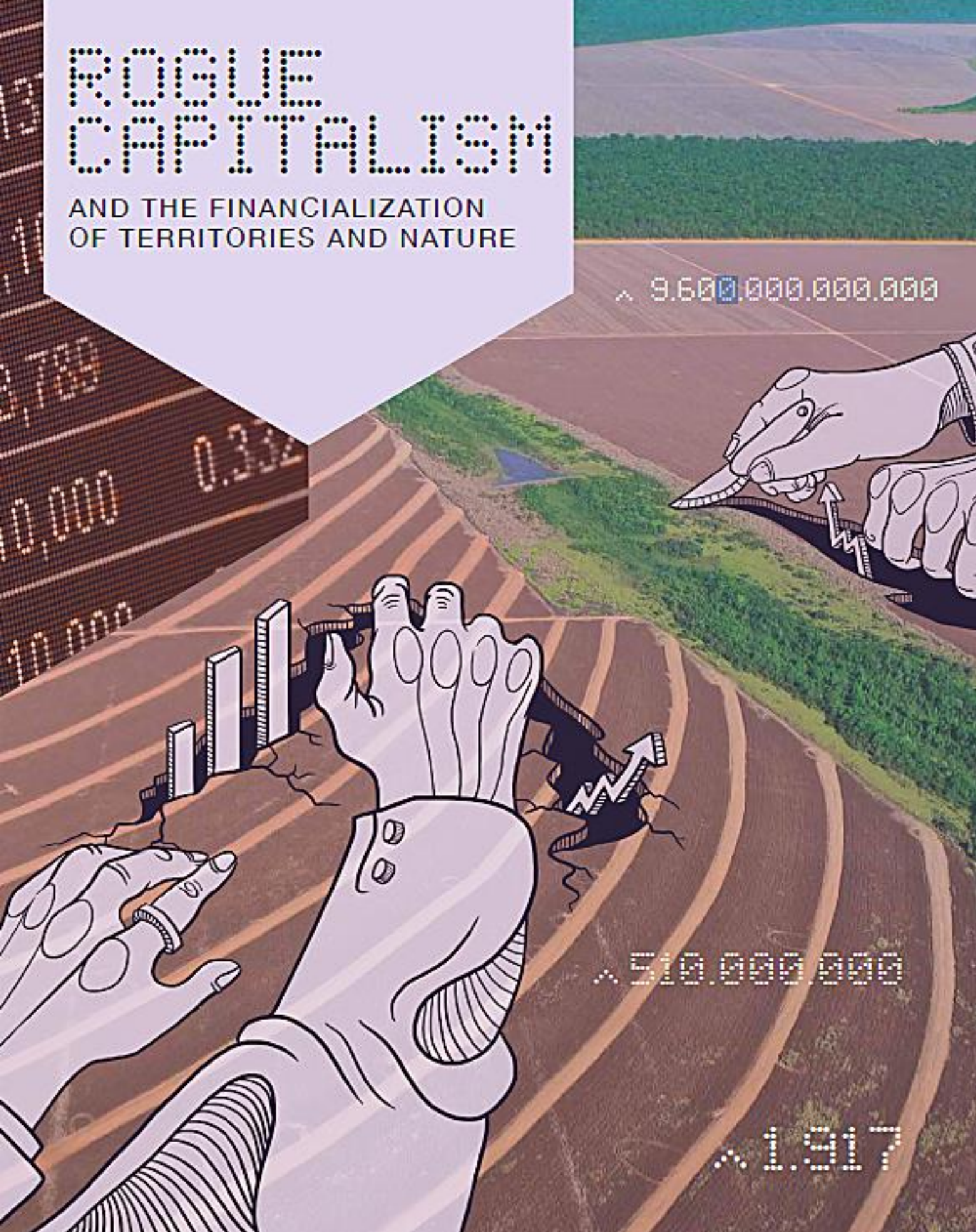
- Accountability of corporations and financial actors
- Financial regulation
- Tax justice -> tackle “flat taxes” on land
- Bioeconomy, Natural Asset Companies

CONVERGENCE OF MOVEMENTS AND STRUGGLES

CROSS-SECTOR STRATEGIES

ROGUE CAPITALISM

AND THE FINANCIALIZATION OF TERRITORIES AND NATURE



El informe contiene 20 ejemplos de cómo la extracción de riqueza de los recursos naturales y su destrucción ecológica se producen a través de una amplia gama de mecanismos como:

- expansión de la agricultura industrial de monocultivos y de la acuicultura intensiva
- privatización del agua
- mercado inmobiliario
- conservación
- proyectos de infraestructura
- minería
- mercado de carbono